

# **Design of a monitoring and evaluation system for Mpumalanga province**

The importance of evidence for decision-making

EVIDENCE 2016

21 September 2016

## **Table of Contents**

Overview

Methodology

Components of the MMES

Linking M&E activities and output, and decision-making

Status of implementation

# Overview

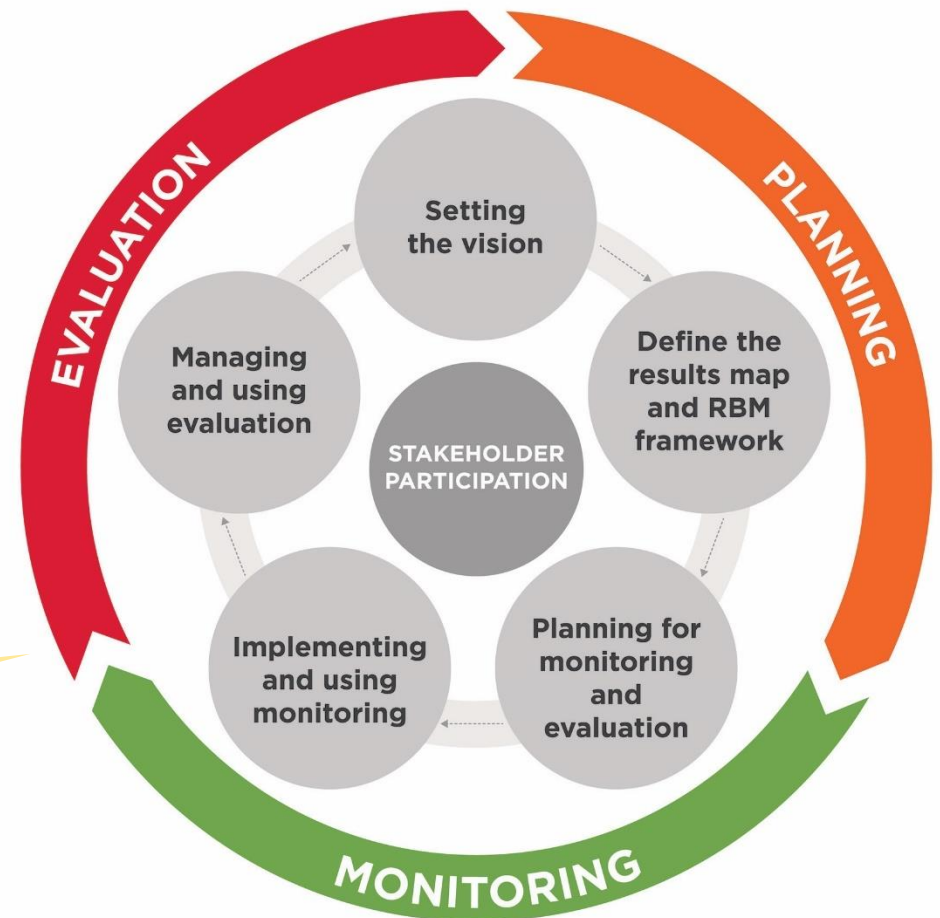
## Introduction

- In 2014, the Office of the Premier of Mpumalanga commissioned the design of an M&E system for the province
- The MMES establishes the activities and processes for M&E to be conducted across all departments

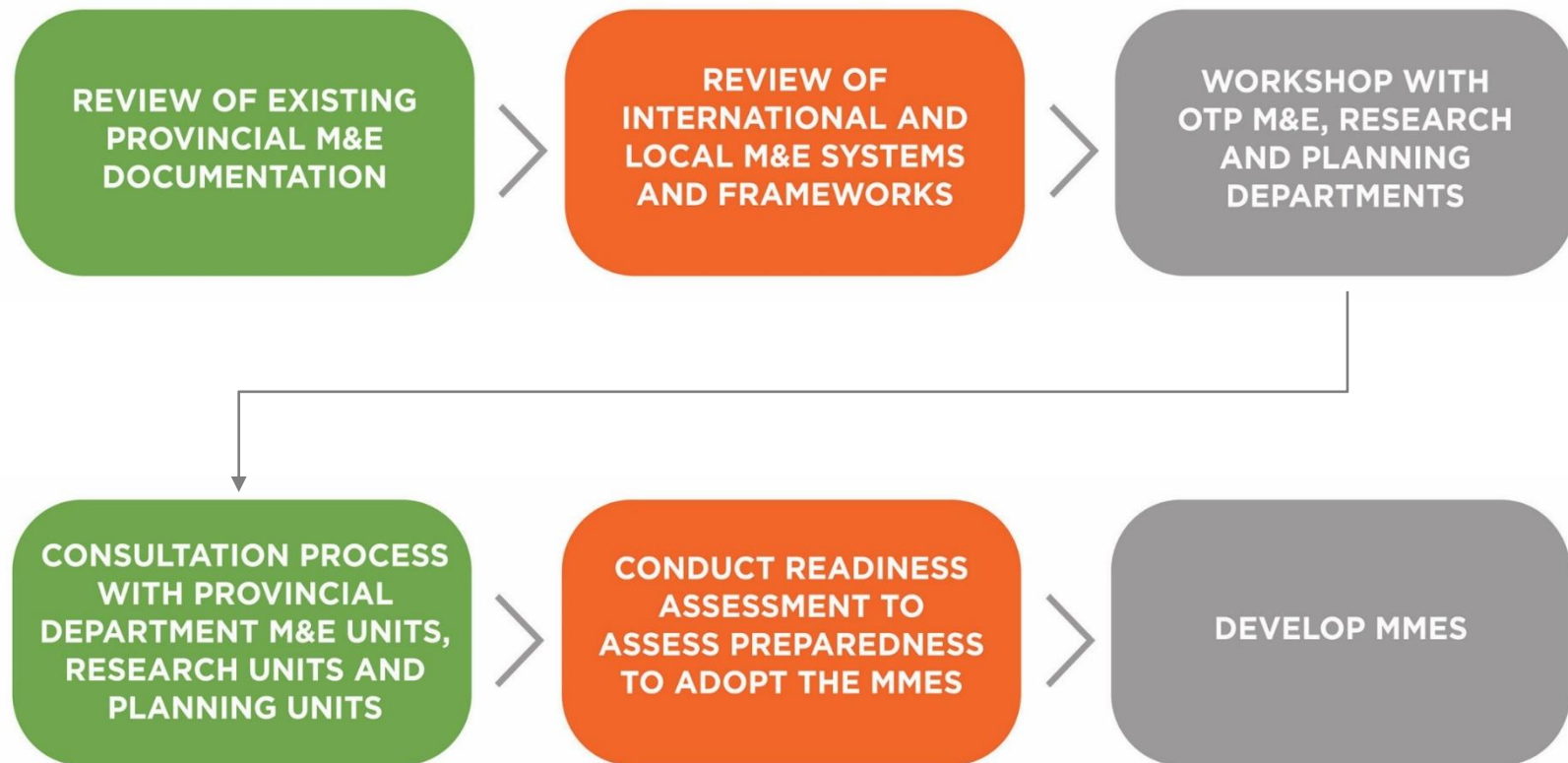
## Purpose of the MMES

- To serve as a management tool to support the implementation of provincial programmes
- To promote evidence-informed decision-making
- To inform programme improvements
- To ensure that M&E activities are conducted in a systematic fashion across the province

Prior to the MMES, these functions were conducted in silos



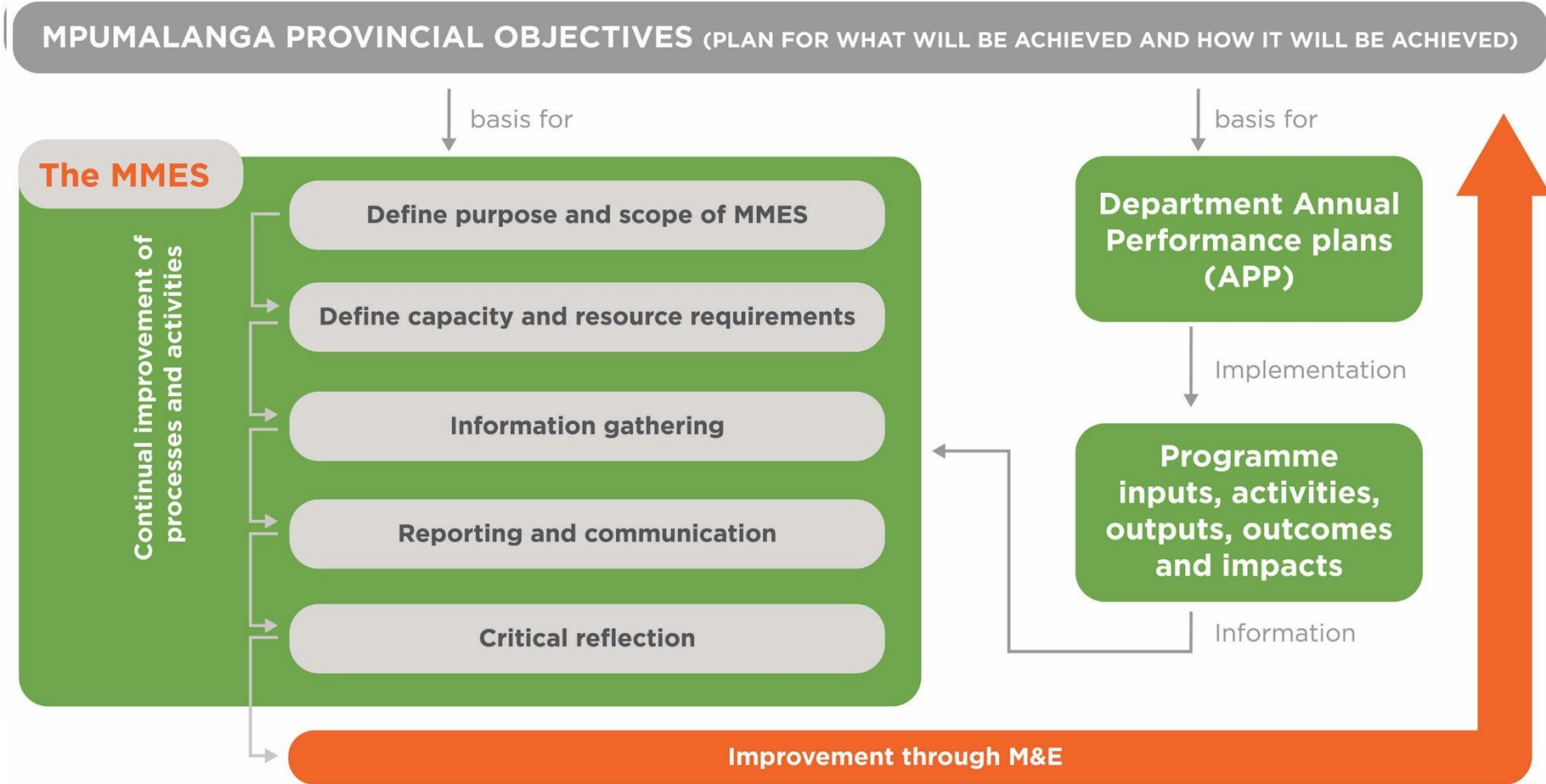
# Methodology



# Components of the MMES

*Using monitoring to inform decision making*

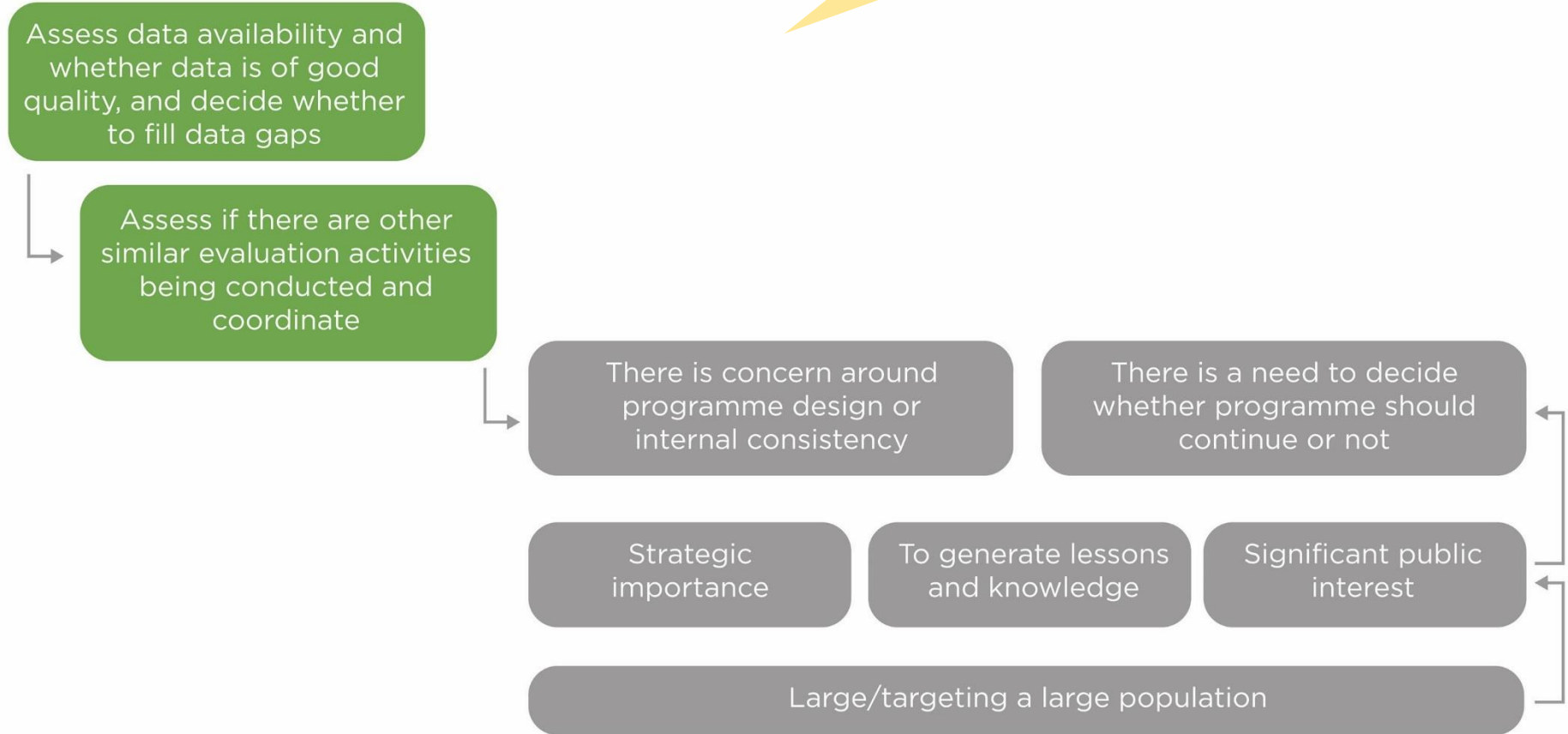
The information needs relating to the provincial strategic objectives are based on what is required to facilitate decision-making, towards improving the lives of Mpumalanga's citizens.



# Components of the MMES

## Using monitoring to inform decision making

Evaluations are valuable tools for informing decision making. With limited resources available, evaluators need to determine what to evaluate and what type of evaluations are most appropriate



# Linking M&E activities and output, and decision-making

Critical reflection describes:

- How stakeholders will collaborate on making sense of M&E information
- How the implications of this information will be assessed
- How this assessment will inform into decision-making

CRITICAL REFLECTION EVENT	PURPOSE AND DESCRIPTION	WHOM TO INVOLVE
Review of Annual Performance Plans	<ul style="list-style-type: none"> <li>■ Summary of key successes and challenges</li> <li>■ Implementation lessons learned</li> <li>■ Ideas for changing objectives and activities</li> </ul>	<ul style="list-style-type: none"> <li>■ M&amp;E Units from each provincial department</li> <li>■ OtP M&amp;E Unit</li> <li>■ OtP Planning Unit</li> <li>■ HoDs of provincial departments (to validate decisions)</li> </ul>
Identification of information needs	<ul style="list-style-type: none"> <li>■ Identify primary M&amp;E stakeholders</li> <li>■ Identify information needs</li> <li>■ Take stock of who is already addressing these information needs</li> <li>■ Agree on priority information areas</li> <li>■ Set performance questions and indicators</li> <li>■ Decide on methods to gather information</li> <li>■ Agree responsibilities</li> </ul>	<ul style="list-style-type: none"> <li>■ M&amp;E Units from each provincial department</li> <li>■ OtP M&amp;E Unit</li> <li>■ OtP Planning Unit</li> <li>■ HoDs of provincial departments (to validate decisions)</li> </ul>
Review of each provincial department's quarterly report	<ul style="list-style-type: none"> <li>■ Discuss key successes and challenges</li> <li>■ Review findings and recommended actions</li> <li>■ Decide which actions to implement</li> </ul>	<ul style="list-style-type: none"> <li>■ M&amp;E Units from each provincial department</li> <li>■ OtP M&amp;E Unit</li> </ul>
Commissioning an evaluation	<ul style="list-style-type: none"> <li>■ Discuss programme status and progress to date</li> <li>■ Discuss relevance to policy and developmental context</li> <li>■ Propose evaluation questions</li> <li>■ Discuss possible evaluation designs and how evaluation will be implemented and managed</li> </ul>	<ul style="list-style-type: none"> <li>■ M&amp;E Units from each provincial department</li> <li>■ OtP M&amp;E Unit</li> </ul>

## Status of implementation

- Since the publication of the MMES, Genesis has conducted a series of workshops and 'M&E clinics'
- While it is still early days, the growing interest in M&E in Mpumalanga provincial government is testament that RBM is beginning to find traction.



**Emily  
Massey**

emilym@genesis-analytics.com

+27 (0)83 656 3998

+27 (0)11 994 7000